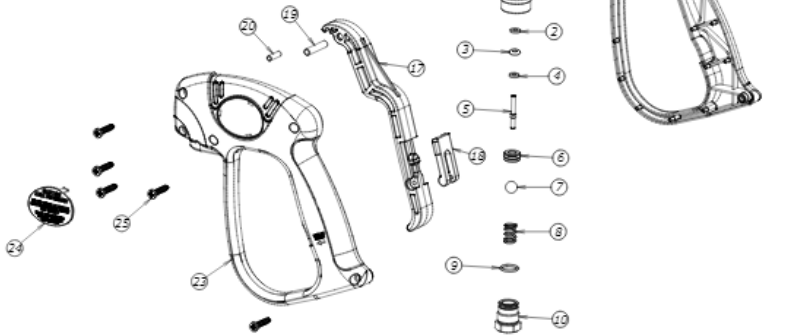




DETTAGLIO-DETAIL B



DETTAGLIO-DETAIL A



Num.	Codice	Descrizione Completa	Quant.	Kit 1	Kit 2	Kit 3	Kit 4
1	C00015021	CORPO ML 330 1/4 NPT F	1				
2	000117	ANELLO ANT. 3,10x 7,40x1,30 TB	1	x			
3	060143	GUOR 2.84X2.62 104 VITON 75 NERO	1	x			
4	R00300014	RONDELLA 3 X 7 X 1,5 OTTONE	1	x			
5	P00004009	PERNO PREMISFERA ML 330	1	x			
6	0106200140	SEDE MV2001 CONDITA CON OR NBR 90	1	x			
7	0112720070	SPERA 11/32 AIST440 C GR10 ISO 3290	1	x			
8	100044	MOLLA CIL. 1,3X8,8X13,5 IX	1				
9	0110750700	GUOR 1.5X11 NBR 90 NERO	1	x			
10	R00000251	RACC. ENTR. ML 330 SWIVEL OT	1				
11	M01700055	MANOPOLA SWIVEL ML330 ROSSA	1				
12	0115711110	RACCORDO GIREVOLE 3/8NPT F OT	1				
13	0117740170	RONDELLA 14 X 10 X 1,5 MV 870 17	1				x
14	0116720200	VITE INNESTO GIREV. VERS. STD IX	1				
15	0117740120	A.A. 11,20X14,00X1,20 TBT	1				x
16	060130	GUOR 1.78X10.82 2043 VITON 75 NERO	1				x
17	L00002057	LEVA ML320-330 NERA	1		x		
18	0100740300	SICURA MV2000 - ROSSA -	1		x		
19	P00000091	PERNO LEVA ML 320 D.5X25 INOX	1		x		
20	0118770030	SPINA 4X14 INOX	1		x		
21	S02301278	SCOCCA ML 330 DX NERA	1				x
22	T00200227	TARGHETTA ML330 DESTRA ROSSA	1				x
23	S02301277	SCOCCA ML 330 SX NERA	1				x
24	T00200170	TARGHETTA MV925 SX ROSSA RAL3020	1				x
25	0116730010	VITE AUTOF. 4 X 19 UNI 9707	5				x

Kit 1 - KIT RICAMBI ML 330 GUARNIZIONI - Cod. 4019900070
 Kit 2 - KIT RICAMBI ML 330 LEVA SIC. ROSSA - Cod. 4019900072
 Kit 3 - KIT RICAMBI ML 330 SCOCHE VITI - Cod. 4019900073
 Kit 4 - KIT RIC. SW STD MV920-MV925-ML330 - Cod. 4019900020

DESCRIZIONE - TITOLI		CODICE CLIENTI - CUSTOMER NUMBER	
ML 330 SW 3/8 NPT F - 1/4 NPT F			
<small> VERBALE APPROVAZIONE LO CARICARE IN BICOLO AN PRATE. R. PER SEGRE VERBALE SEGRE APPROVAZIONE SOCIETA' S.p.A. TECOMEC S.p.A. IT IS CONSIDERED TO PARTIALLY OR TOTALLY COPY, USE, OR DISCLOSE THIS MATERIAL WITHOUT WRITTEN CONSENT FROM TECOMEC S.p.A. </small>			
		CODICE - PART NO.	REV.
<small>401 3302018</small>		4013302018	0